

MONTHLY MEMBERSHIP PROGRESS REPORT

LOCATION NEW ZEALAND

District 202 D

Results as of: 4/30/2022

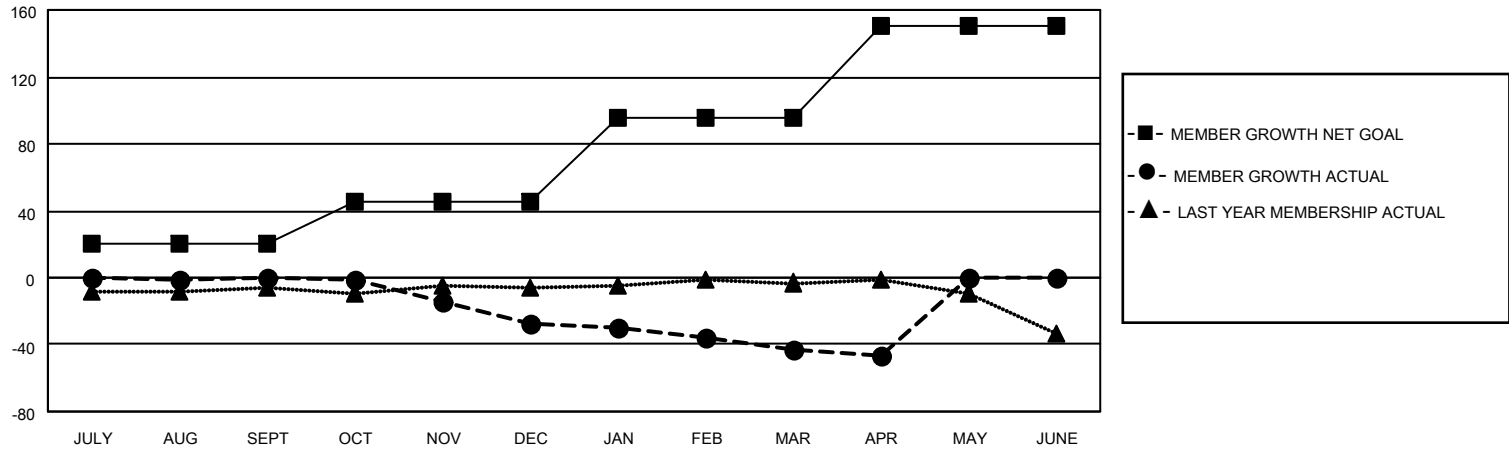
Clubs			
RESULTS FOR 2021-2022			
QUARTER	NEW CLUB GOAL	NEW CLUBS	DROPPED CLUBS
JULY/AUG/SEPT	0	0	0
OCT/NOV/DEC	0	0	1
JAN/FEB/MAR	0	0	0
APR/MAY/JUNE	0	0	0

Members			
RESULTS FOR 2021-2022			
QUARTER	MEMBER GROWTH NET GOAL	MEMBER GROWTH ACTUAL	DROPPED MEMBERS ACTUAL (including transfers)
JULY/AUG/SEPT	20	23	20
OCT/NOV/DEC	25	5	32
JAN/FEB/MAR	50	9	23
APR/MAY/JUNE	55	7	11

GOALS AND ACTUAL NEW CLUBS CUMULATIVE



GOALS AND ACTUAL MEMBERS CUMULATIVE



DROPPED CLUBS: 1	
DROPPED MEMBERS	
DECEASED	20
CLUB CANCELLED	0
OTHER	66
TOTAL	86

15 CLUBS OF 36 ADDED 1 OR MORE NEW MEMBERS

[CLICK HERE FOR CUMULATIVE MEMBERSHIP DATA](#)

<u>GENDER DISTRIBUTION</u>	
MALE	723 (71.02%)
FEMALE	295 (28.98%)
NON BINARY	0 (0.00%)
PREFER NOT TO ANSWER	0 (0.00%)
TOTAL FAMILY UNIT MEMBERS	95
FAMILY MEMBERS PAYING HALF DUES	48